



**HOW TO**

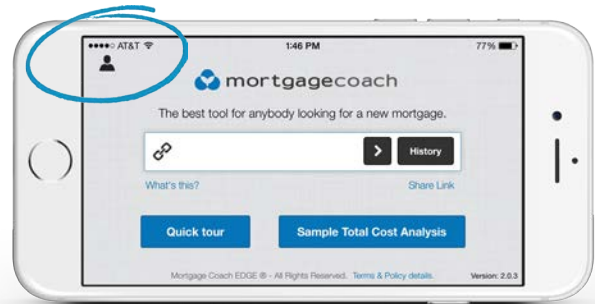
HIGHLIGHT

**IN REAL TIME**

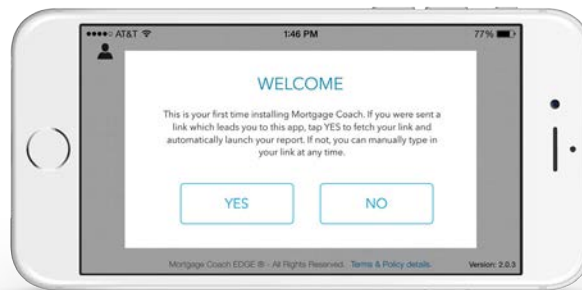
## HOW TO HIGHLIGHT IN REAL TIME

1

**SELECT** the login icon on the top left corner of the screen.

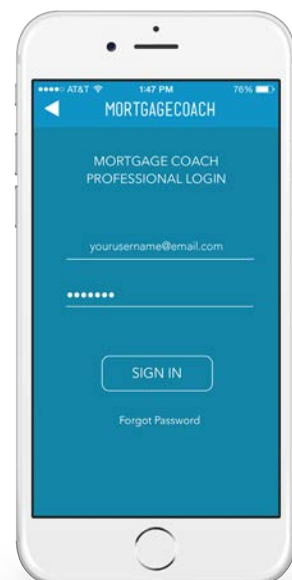


If this is the first time using the mobile app since our update, you will be prompted with this welcome screen.

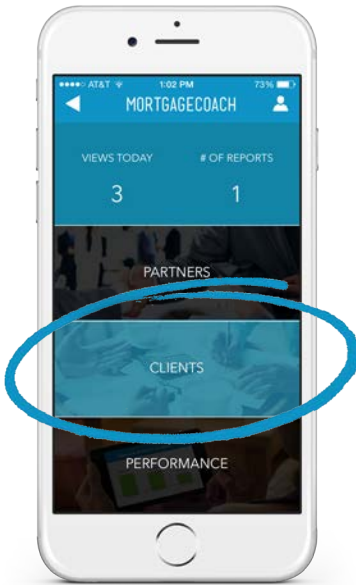


2

**ENTER** your email and password on the Mortgage Coach Pro Login Page.



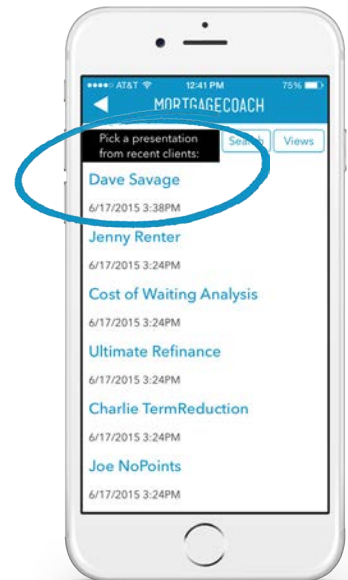
3



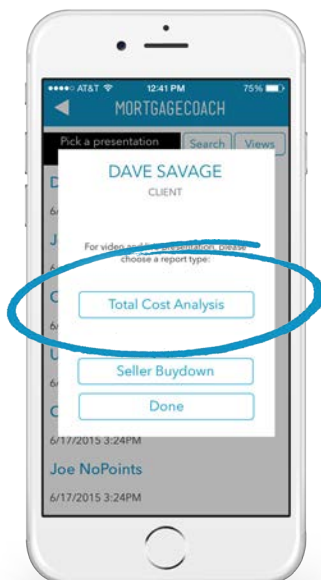
**SELECT** Clients or Partners.

4

**SELECT** a client/presentation.

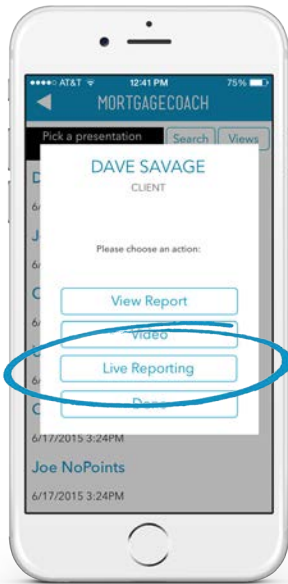


5



**SELECT TOTAL COST ANALYSIS** on the pop-up window.

6



## SELECT Live Reporting.

7

## GUIDE your presentation.

The app will direct you to the report you chose. As you move through the presentation, select different charts, and highlight fields, the client will see the same happening on their preferred device, from mobile to desktop.



 A screenshot of the MortgageCoach app showing a 'Summary' table. The table compares 'Current' and 'New 30 Fixed' scenarios across various metrics. The 'New 30 Fixed' column is highlighted in yellow.
 

	CURRENT	NEW 30 FIXED	30 ARM	5/1 ARM 1 PT
Loan Amount:	\$200,000	\$200,000	\$200,000	\$200,000
Interest Rate:	5.475%	4.875%	4.25%	4.875%
APR:	NA	4.887%	4.271%	4.920%
Term (mo):	360	360	360	360
Payment:	\$630.27	\$1,177.81	\$1,380.81	\$1,700.00
Tax Benefit:	\$460.00	\$111.68	\$453.02	\$390.12
Production Pmt:	\$0.00	\$288.44	\$400.00	\$488.44
Cash To Close:	\$0.00	\$2,762.96	\$2,762.12	\$2,762.00
Monthly Savings:	\$0.00	\$429.46	\$688.80	\$929.27
1st Lien TIP:	NA	42.02%	38.81%	44.62%

